

# iOLM + FIP Report



## iOLM General Information

Filename:  
 Test date:  
 Test time:  
 Job ID:  
 Customer:  
 Company:  
 Operator:  
 Unit model:  
 Unit S/N:  
 Calibration date:  
 Comments:

## FIP General Information

Filename: H\_L8\_R06\_FWS1.cmax2  
 Test date: 25/4/2014  
 Test time: 4:41:50 PM (GMT+08:00)  
 Job ID:  
 Customer:  
 Company:  
 Operator:  
 Unit model: FIP-430B  
 Unit S/N: 758354  
 Comments:

## iOLM Identifiers

## FIP Identifiers

Cable ID:  
 Fiber ID:  
 Connector ID:  
 Location: L8-R6-FWS1

## iOLM Results

Wavelength (nm)	Link loss (dB)	Link ORL (dB)	Propagation delay (µs)
-----------------	----------------	---------------	------------------------

Link length:  
 Acquisition status:

## FIP Results Table

Zone	Scratches		Defects	
	Criteria	Count	Criteria	Count
A: Core	0µm≤size<∞	0	0µm≤size<∞	1
B: Cladding	0µm≤size<3µm	0	0µm≤size<2µm	5
	3µm≤size<∞	0	2µm≤size<5µm	15
			5µm≤size<∞	7
C: Adhesive	---	---	---	---
D: Contact	0µm≤size<∞	0	0µm≤size<10µm	50
			10µm≤size<∞	8

## iOLM Pass/Fail Thresholds

## FIP Thresholds

Zone	Scratches		Defects	
	Criteria	Thr.	Criteria	Thr.
A: Core	0µm≤size<∞	0	0µm≤size<∞	0
B: Cladding	0µm≤size<3µm	any	0µm≤size<2µm	any
			2µm≤size<5µm	5
	3µm≤size<∞	0	5µm≤size<∞	0
C: Adhesive	---	---	---	---
D: Contact	0µm≤size<∞	any	0µm≤size<10µm	any
			10µm≤size<∞	0

## iOLM Test Settings

Launch fiber length:  
 Receive fiber length:  
 IOR:  
 Backscatter:  
 Fiber core size:

## FIP Test Parameters

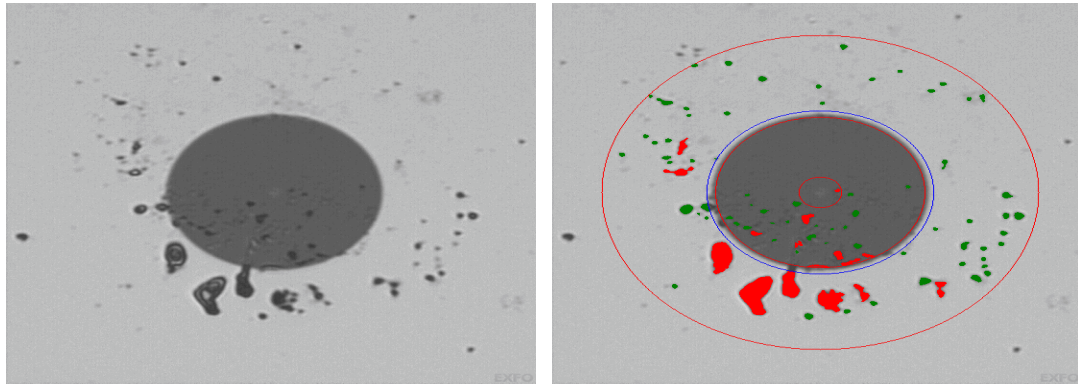
Configuration: IEC SM SF UPC ORL ≥ 45 dB  
 Connector type: (SF) Single-Fiber connector  
 Fiber type: (SM) Single-Mode fiber  
 Polishing type: (UPC) Ultra-polished physical contact  
 Focus level: 87.00% (Nominal)

# iOLM + FIP Report

 **Fail**

FIP Graphs A->B

---



# iOLM + FIP Report



## iOLM General Information

Filename: MDF\_1310 + 1550\_L8-R06\_FWS1.iolm  
Test date: 25/4/2014  
Test time: 4:44:56 PM (GMT+08:00)  
Job ID:  
Customer:  
Company:  
Operator:  
Unit model: FTB-720G+23B-EA  
Unit S/N: 735635  
Calibration date: 6/11/2013

Comments:

## iOLM Identifiers

Cable ID:  
Fiber ID:  
Location A: L8-R6-FWS1  
Location B: MDF Room @ Port L8R6P1  
None:

## iOLM Results

Wavelength (nm)	Link loss (dB)	Link ORL (dB)	Propagation delay (µs)
1550	2.476	46.86	0.437
1310	1.882	45.27	0.437

Link length: 0.0892 km

Acquisition status: Completed

## iOLM Pass/Fail Thresholds

	1310 nm	1550 nm
Max. link loss	3.000 dB	3.000 dB
Max. link ORL	45.00 dB	45.00 dB
Max. splice loss	0.050 dB	0.050 dB
Max. connector loss	0.300 dB	0.300 dB
Reflectance	-50.0 dB	-50.0 dB

## iOLM Test Settings

Launch fiber length: 0.1641 km  
Receive fiber length: 0.5116 km  
IOR: 1.468325  
Backscatter: -81.87 dB  
Fiber core size: 9 µm

## FIP General Information

Filename:  
Test date:  
Test time:  
Job ID:  
Customer:  
Company:  
Operator:  
Unit model:  
Unit S/N:  
Comments:

## FIP Identifiers

Cable ID:  
Fiber ID:  
Connector ID:  
Location:

## FIP Results Table

Zone	Scratches		Defects	
	Criteria	Count	Criteria	Count

## FIP Thresholds

Zone	Scratches		Defects	
	Criteria	Thr.	Criteria	Thr.

## FIP Test Parameters

Configuration:  
Connector type:  
Fiber type:  
Polishing type:  
Focus level:



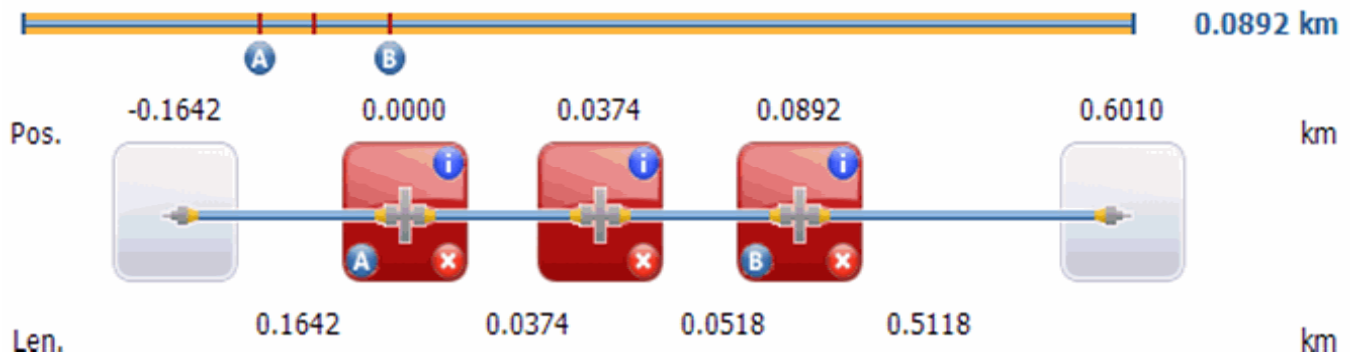
Signature: \_\_\_\_\_

Date: 21/5/2014

# iOLM + FIP Report



Link View



iOLM Table

Element Type	Position (km)	Loss (dB)		Reflectance (dB)		Diagnostic
		1310 nm	1550 nm	1310 nm	1550 nm	
Connector	-0.1642	0.349	0.237	-69.6	-73.2	
Connector (A)	0.0000	0.549	0.690	-47.5	-49.0	The connector or bulkhead is damaged, dirty or not well connected. Inspect and clean as needed.
Connector	0.0374	1.112	1.326	-57.4	-55.7	The connector or bulkhead is damaged, dirty or not well connected. Inspect and clean as needed.
Connector (B)	0.0892	0.221	0.461	-52.3	-53.5	The connector or bulkhead is damaged, dirty or not well connected. Inspect and clean as needed.
Connector	0.6010	---	---	-30.4	-28.4	

# iOLM + FIP Report



## iOLM General Information

Filename:  
 Test date:  
 Test time:  
 Job ID:  
 Customer:  
 Company:  
 Operator:  
 Unit model:  
 Unit S/N:  
 Calibration date:  
 Comments:

## FIP General Information

Filename: P-L8-6-F1.cmax2  
 Test date: 25/4/2014  
 Test time: 6:54:20 PM (GMT+08:00)  
 Job ID:  
 Customer:  
 Company:  
 Operator:  
 Unit model: FIP-430B  
 Unit S/N: 758356  
 Comments:

## iOLM Identifiers

## FIP Identifiers

Cable ID:  
 Fiber ID:  
 Connector ID:  
 Location: MDF Room @ Port L8R6P1

## iOLM Results

Wavelength (nm)	Link loss (dB)	Link ORL (dB)	Propagation delay (µs)
-----------------	----------------	---------------	------------------------

Link length:  
 Acquisition status:

## FIP Results Table

Zone	Scratches		Defects	
	Criteria	Count	Criteria	Count
A: Core	0µm≤size<∞	0	0µm≤size<∞	0
B: Cladding	0µm≤size<3µm	0	0µm≤size<2µm	7
	3µm≤size<∞	0	2µm≤size<5µm	1
			5µm≤size<∞	0
C: Adhesive	---	---	---	---
D: Contact	0µm≤size<∞	0	0µm≤size<10µm	28
			10µm≤size<∞	1

## iOLM Pass/Fail Thresholds

## FIP Thresholds

Zone	Scratches		Defects	
	Criteria	Thr.	Criteria	Thr.
A: Core	0µm≤size<∞	0	0µm≤size<∞	0
B: Cladding	0µm≤size<3µm	any	0µm≤size<2µm	any
	3µm≤size<∞	0	2µm≤size<5µm	5
			5µm≤size<∞	0
C: Adhesive	---	---	---	---
D: Contact	0µm≤size<∞	any	0µm≤size<10µm	any
			10µm≤size<∞	0

## iOLM Test Settings

Launch fiber length:  
 Receive fiber length:  
 IOR:  
 Backscatter:  
 Fiber core size:

## FIP Test Parameters

Configuration: IEC SM SF UPC ORL ≥ 45 dB  
 Connector type: (SF) Single-Fiber connector  
 Fiber type: (SM) Single-Mode fiber  
 Polishing type: (UPC) Ultra-polished physical contact  
 Focus level: 84.00% (Nominal)



Signature: \_\_\_\_\_

Date: 21/5/2014

# iOLM + FIP Report

 **Fail**

FIP Graphs B->A

---

